

Section B

Question 15



OPERATING BUDGET SAMPLE BOOK: FY 2000-2001

- Does document include departmental organizational charts. 1 pt.
 - Could be imbedded in overall organization chart if room permits.
 - Ask the departments to provide them.

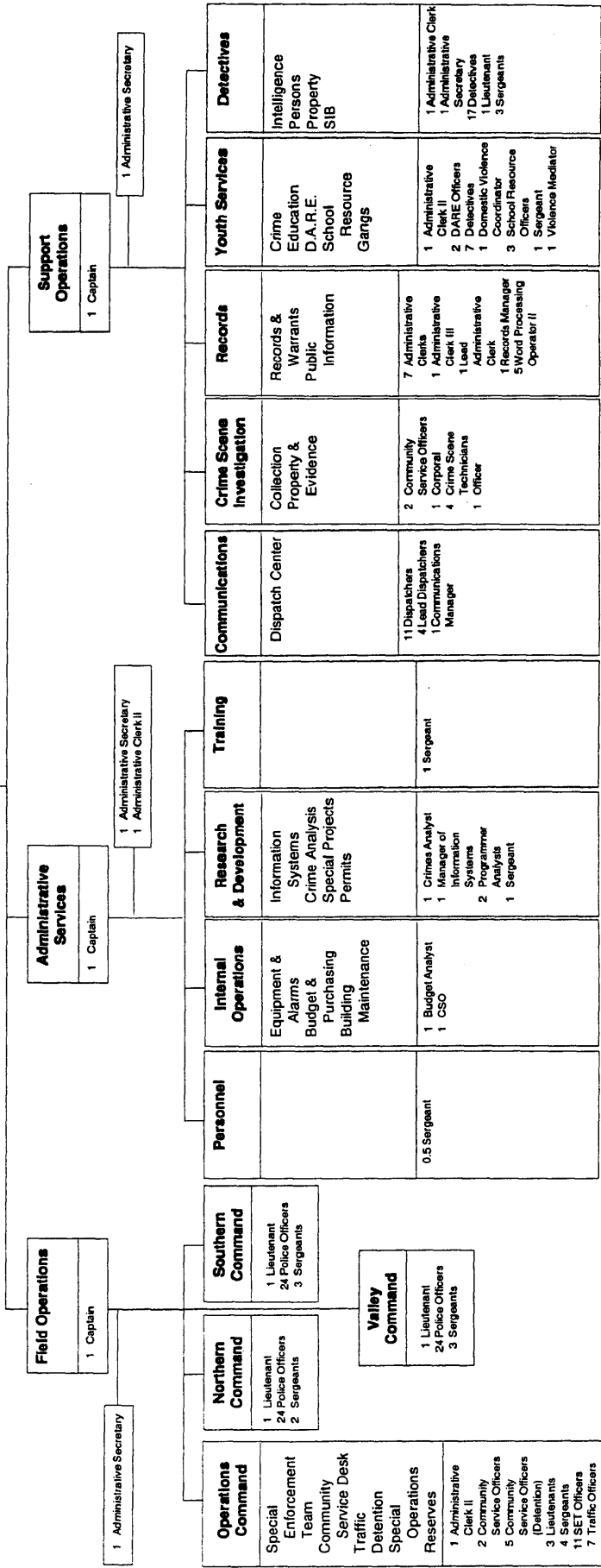


Police
Chief of Police
Total Full-Time Staff - 213

1 Executive Secretary

Professional Standards
.5 Sergeant

Community Action
Crime Prevention
Neighborhood
Watch Volunteers
1 Sergeant
1 Volunteer Coordinator

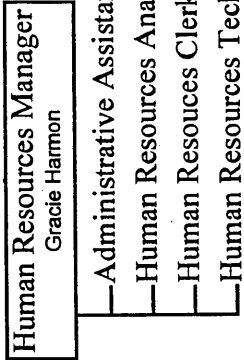


1999/2000 Organization Chart

Human Resources

Effective 7/1/99

Budgeted 7 FTE Positions



FINANCIAL AND TECHNICAL SERVICES Business Center

